

Turf Type Perennial Ryegrass

Primary

Product Sheet

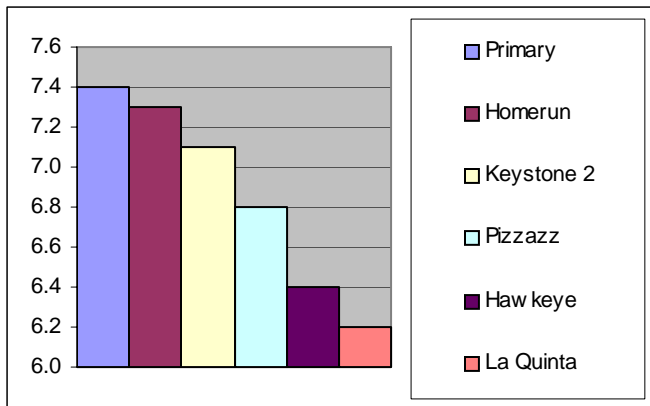
CHARACTERISTICS

Primary is a progeny collection that is broadly adapted for improved turf persistence and quality. **Primary** has improved heat tolerance, superior summer performance and natural resistance to a number of disease complexes.

Primary has good resistance to Gray Leaf Spot, brown blight, red thread, crown rust and brown patch. Its aggressive tillering and fine leaf texture provides a dense, quality turf. **Primary** is quick to green-up in the spring and has excellent spring vigor and density.

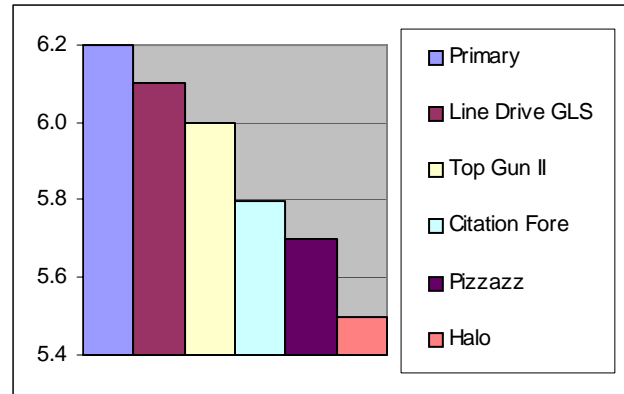
Primary's superior turf quality consistently rated it near the top for wear tolerance.

TRIAL DATA



2004 NTEP Perennial Ryegrass Test-2008 Data. Fall Density Ratings. Top variety Dasher 3 (7.6) and bottom variety Linn (5.3). LSD 0.7. Density Ratings 1-9, 9=Maximum Density. See full report and more data available at www.ntep.org

TRIAL DATA



2004 NTEP Perennial Ryegrass Test-2008 Data. Schedule B Maintenance Turfgrass Quality Ratings. Top variety Palmer IV (6.4) and bottom variety Linn (2.7). LSD 0.3. Mean Quality Ratings 1-9, 9=Ideal Turf. See full report and more data available at www.ntep.org

SEEDING RATE

- Permanent Turf: 7-8 lbs./1,000 square feet
- Overseeding: 3-4 lbs./1,000 square feet
- Overseeding Warm Season Turf: 10-20 lbs./1,000 square feet

BENEFITS

- Excellent Resistance to Gray Leaf Spot
- Fine Leaf Texture
- Dark Green Genetic Color
- Excellent Wear Tolerance
- Great Turf Density
- Handles Close Mowing



Seeding the Future Together!

887 NW Grant Avenue
 Corvallis, OR 97330
 Phone: 541-757-1468 Fax: 541-757-1479
 Toll Free: 888-681-7333
www.columbiaseeds.com